

Soil Gas Flux Measurement Solutions

Complete systems guided by scientific principles from the ground up



LI-COR[®]

Why measure soil gas flux?

Soils produce or consume a substantial amount of gases from the atmosphere through biological processes, including root respiration and organic matter decay. Gases—such as CO_2 , CH_4 , N_2O , and isotopologues—are continuously exchanged between the atmosphere and soil. Measuring soil gas flux can help researchers characterize greenhouse gas emissions, understand the mechanisms that regulate gas flux, and monitor carbon sequestration efforts, among other applications.

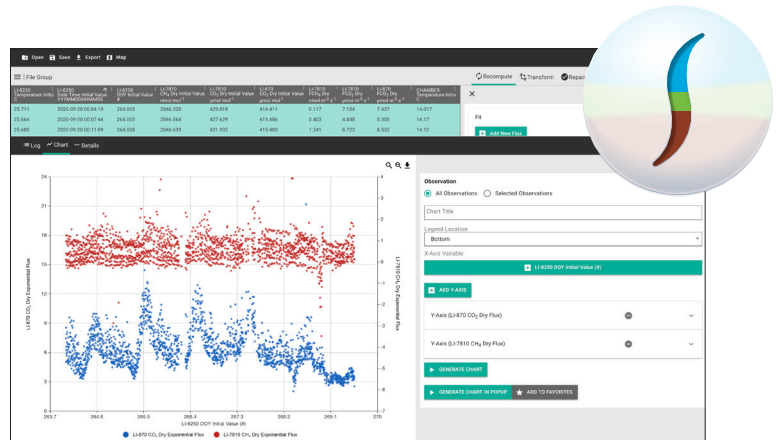




What makes LI-COR different?

In a typical chamber-based soil gas flux system, a chamber temporarily closes over the soil surface. Then a gas analyzer measures gas concentrations from the chamber air. In closed-chamber systems, fluxes are calculated using the rate of change in gas concentration over time and other parameters.

LI-COR is unique in that we design and manufacture complete systems for soil gas flux measurements. From patented hardware and analyzers that take the measurements, to SoilFluxPro™ Software that extends your flux data analysis capabilities—we have you covered.



LI-COR soil gas flux systems are modular and flexible to grow with your research. We offer gas analyzers that measure multiple key greenhouse gas species and have the portability and low-power requirements necessary for survey or long-term research. Chambers are available for both survey and long-term systems, with long-term systems allowing any combination of up to 36 LI-COR or custom-built long-term chambers.



Minimizing chamber influence through engineering

An inherent challenge to chamber design is the influence the chamber may have on measurements. LI-COR chambers include patented technology exclusive to LI-COR to minimize the effects of chamber placement on the soil, such as disturbances from chamber closing, poorly mixed chamber air, and chamber pressure perturbations.



Equalize chamber pressure

Any difference between the air pressure inside a soil chamber and ambient air will affect the flux rate. If the chamber is not properly vented, under windy conditions the Venturi effect can cause a mass flow of air from the soil into the chamber, leading to significant overestimation of soil gas flux.

To maintain pressure equilibrium, all LI-COR soil chambers feature a patented pressure vent.

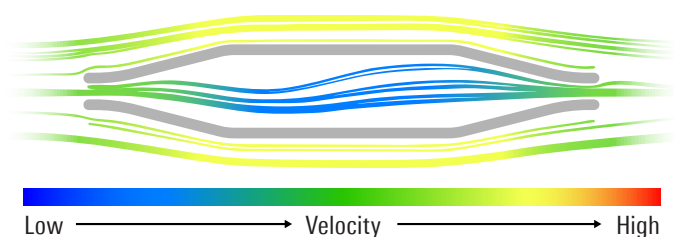


Figure 1. Cross section of the patented pressure vent used on all LI-COR chambers. As air is forced into the vent by wind, the average wind speed drops. As a result, most of the dynamic pressure is converted to static pressure, virtually eliminating the Venturi effect.¹ The patented vent (U.S. Patent 7,856,899) is radially symmetric to eliminate sensitivity to wind direction.²

Minimize soil disturbance

Any mechanical disturbance to the soil during a measurement can artificially influence gas fluxes. LI-COR chambers are placed over soil collars that are inserted before measuring. An automated mechanism seals the chamber around the collar. Because the chamber never touches the collar directly, any soil disturbance is negligible, and fluxes are minimally affected.

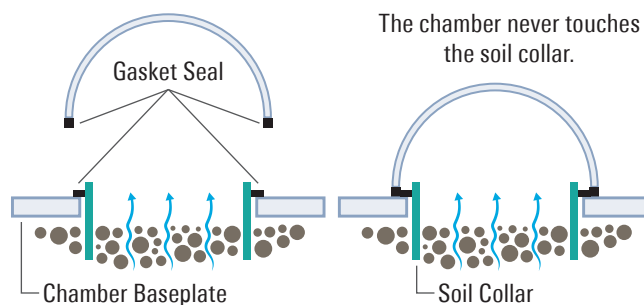


Figure 2. All LI-COR chambers feature a gasket seal around the soil collar with a second gasket on the chamber bowl to minimize disturbances to the soil collar when the chamber is placed or moved.

Optimize chamber air mixing

Air mixing is critical for accurate flux measurements, but fans create pressure gradients within the chamber that may suppress or enhance flux.

All LI-COR soil chambers are designed without fans, and mixing is achieved through a bowl-shaped chamber and air inlet/outlet positioning.

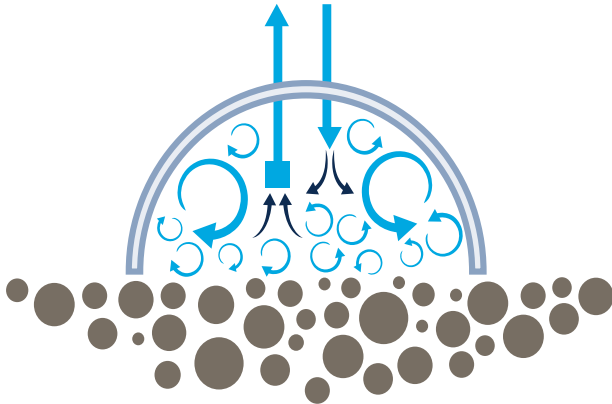


Figure 3. The shape of the chamber, along with air inlet and air outlet placement, ensures that the air within the chamber is well mixed.

Account for an altered diffusion gradient

When measuring gas concentration, you answer the question: “How much of a gas is at a location at a given moment?” When measuring gas flux, however, you answer the question: “How much of a gas is being emitted or absorbed from an area over a fixed period?”

Flux is determined from the rate at which gas concentrations change inside the chamber (Figure 4). However, once the chamber closes over a soil collar, gas concentrations increase and affect the gas diffusion gradient—suppressing the efflux. A linear regression often leads to flux underestimation. In some soils, such as porous soil, the underestimation can be significant.

The Smart Chamber, the LI-8250 Multiplexer, and SoilFluxPro™ Software all use an exponential function when computing fluxes to account for the impact of an altered diffusion gradient and to estimate flux at the time of chamber closing—when gas concentration is at ambient levels. Here we use CO₂

as an example to describe the exponential function:

$$C' = C'_s + [C'_0 - C'_s]e^{-\alpha t}$$

where C' is the instantaneous water vapor dilution-corrected chamber CO₂ mole fraction, C'_s is the water vapor dilution-corrected CO₂ concentration in the soil surface layer under the chamber, and α is a rate constant. With the initial slope ($\partial C'/\partial t$ at $t=0$) of the function, the flux is estimated at the time of chamber closing, when C' is close to the ambient level (C'_0).

$$\frac{\partial C'}{\partial t} = \alpha[C'_s - C'_0]e^{-\alpha t}$$

Calculating the flux from the measured parameters is accomplished with:

$$F_c = \frac{VP_0(1 - W_0)}{RS(T_0 + 273.15)} \frac{\partial C'}{\partial t}$$

where F_c is the soil CO₂ flux, V is volume, P_0 is the initial pressure, W_0 is the initial water vapor mole fraction, S is soil surface area inside the chamber, T_0 is initial chamber air temperature, and $\partial C'/\partial t$ is the initial rate of change in water vapor dilution-corrected CO₂ mole fraction.

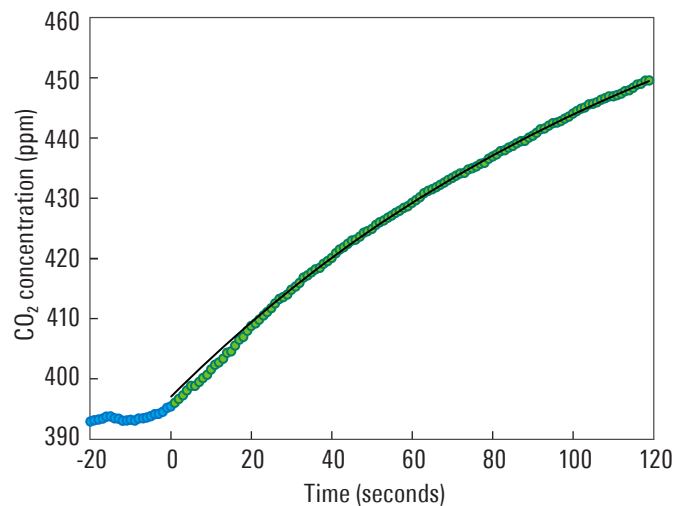


Figure 4. The CO₂ concentration in the chamber begins to increase the moment the chamber closes. As a result, the flux begins to decrease, indicated by the slope ($\partial C'/\partial t$) that decreases with time. Blue circles represent the pre-measurement CO₂ concentration; green circles represent the concentration during the measurement. An exponential fit can minimize the effect of an altered diffusion gradient.

References

- Xu, L., Furtaw, M.D., Madsen, R.A., Garcia, R.L., Anderson, D.J., and McDermitt, D.K. (2006). On maintaining pressure equilibrium between a soil CO₂ flux chamber and ambient air. *Journal of Geophysical Research*, 111(D8). DOI: 10.1029/2005JD006435
- Furtaw, M.D., McDermitt, D.K., and Xu, L. (2010). Vent and soil flux measurement system. U.S. Patent No. 7,856,899. Washington, DC: U.S. Patent and Trademark Office.



SoilFluxPro™ Software: Data processing simplicity

SoilFluxPro Software is a powerful, free software included with all LI-COR survey and long-term systems to help manage large datasets and simplify them into the details you are interested in. SoilFluxPro provides you with all the raw data and allows you to adjust critical parameters and recalculate entire datasets at the push of a button.

- Revise parameters, such as start and stop time, then recompute fluxes from both long-term and survey datasets
- Perform quality assurance and quality control checks using revised parameters
- Plot results and statistics quickly to evaluate measurements individually or in groups
- Compute statistics for individual measurements or whole datasets
- Create .kml files to map concentrations and fluxes on Google Earth™
- Compute fluxes from measurements made by third-party analyzers

Why choose SoilFluxPro?

Quality control your soil gas flux results

With a LI-COR gas analyzer, the Smart Chamber and the LI-8250 Multiplexer calculate real-time fluxes. SoilFluxPro™ can be used to revise parameters, such as start and stop time, then recompute fluxes of entire datasets for quality assurance checks. Built-in tools allow for quality control and quick evaluation of your datasets.

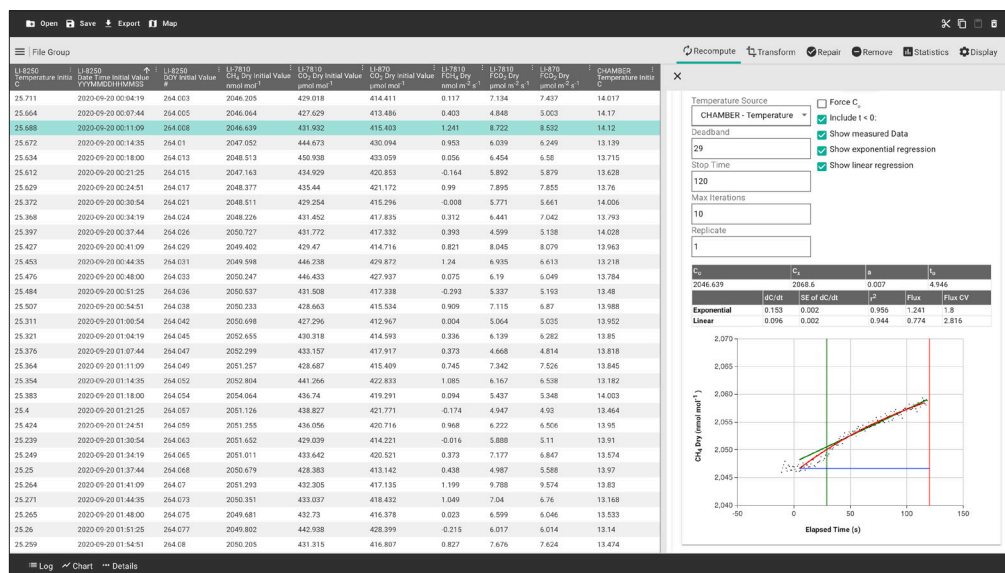


Figure 5. Easily revise key parameters, such as start and stop time, and instantly see the effect on your flux calculations. Shown are CH₄ concentration data used in the flux calculation from an LI-8250 Multiplexer using an LI-7810 CH₄/CO₂/H₂O Trace Gas Analyzer.

Keep the flexibility you started with

The Smart Chamber and LI-8250 Multiplexer both integrate analyzers of various gas species, including third-party analyzers. SoilFluxPro carries that integration through post-processing. Compute fluxes of trace gases and isotopologues using complex datasets imported from LI-COR and third-party analyzers.

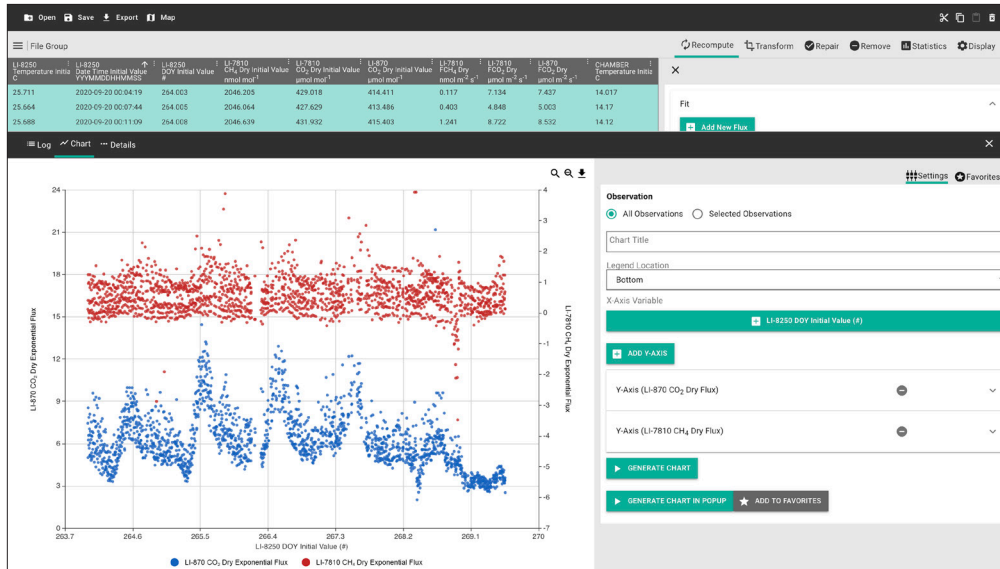


Figure 6. Graph fluxes, concentrations, and other variables to see changes over time or to compare with other variables. Shown are fluxes over time of CH₄ and CO₂ using data from an LI-7810 Trace Gas Analyzer and LI-870 CO₂/H₂O Analyzer, respectively. Data was collected concurrently by the LI-8250 Multiplexer.

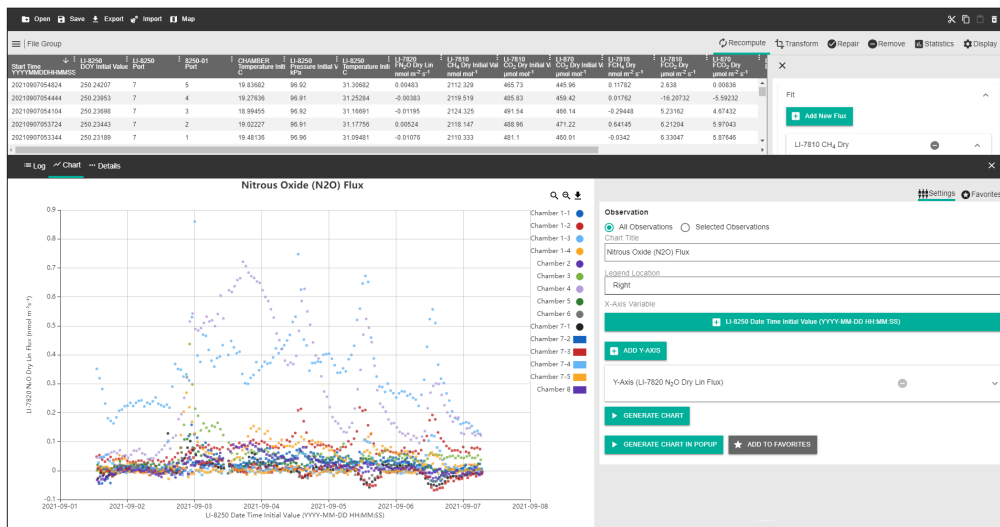


Figure 7. Group data by chamber to compare fluxes and see both spatial and temporal differences across a field site. Shown are soil gas fluxes of N₂O collected from 15 long-term chambers at a field site in Lincoln, Nebraska. Data was collected using the LI-8250 Multiplexer, two 8250-01 Extension Manifolds, and the LI-7820 N₂O/H₂O Trace Gas Analyzer.

Map your soil gas fluxes

Each measurement is tagged with GPS location data. SoilFluxPro uses that data to create a .kml file with concentrations and fluxes. You can then export that .kml file to the Google Earth™ mapping service to see a variety of visualizations.



Gas analyzer
LI-COR gas analyzers deliver precise measurements and seamlessly integrate with the Smart Chamber for real-time flux processing.

Smart Chamber
The Smart Chamber is a battery-powered chamber with an embedded microprocessor and internal storage for real-time flux calculations with a LI-COR gas analyzer. The Smart Chamber also supports third-party gas analyzers.

SoilFluxPro™ Software
SoilFluxPro Software uses data from the Smart Chamber and allows you to optimize measurements, map fluxes and concentrations around your study site, and much more.

Survey systems: Assess spatial variability

LI-COR survey systems are portable and allow a researcher to quickly make soil gas flux measurements to characterize flux over a large area of interest. A survey system is uniquely suited to:

- Assess the spatial variability of soil gas flux over a large area
- Move quickly from one collar to the next to measure many points across your site
- Deploy in locations where instruments cannot be left long term

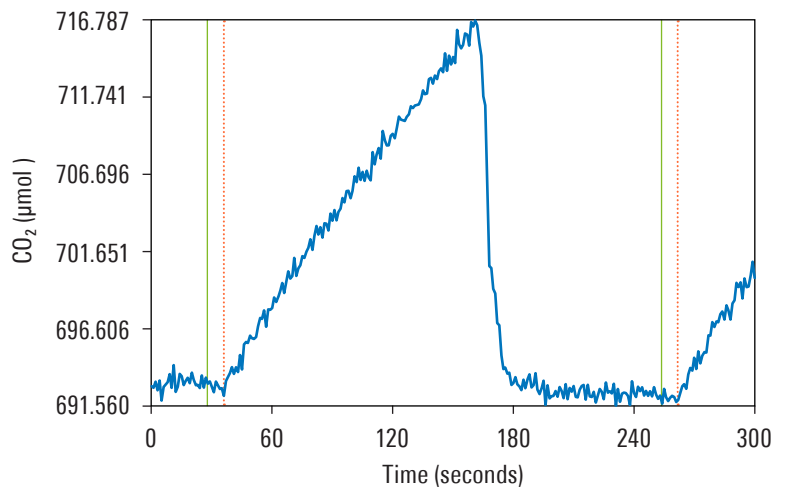
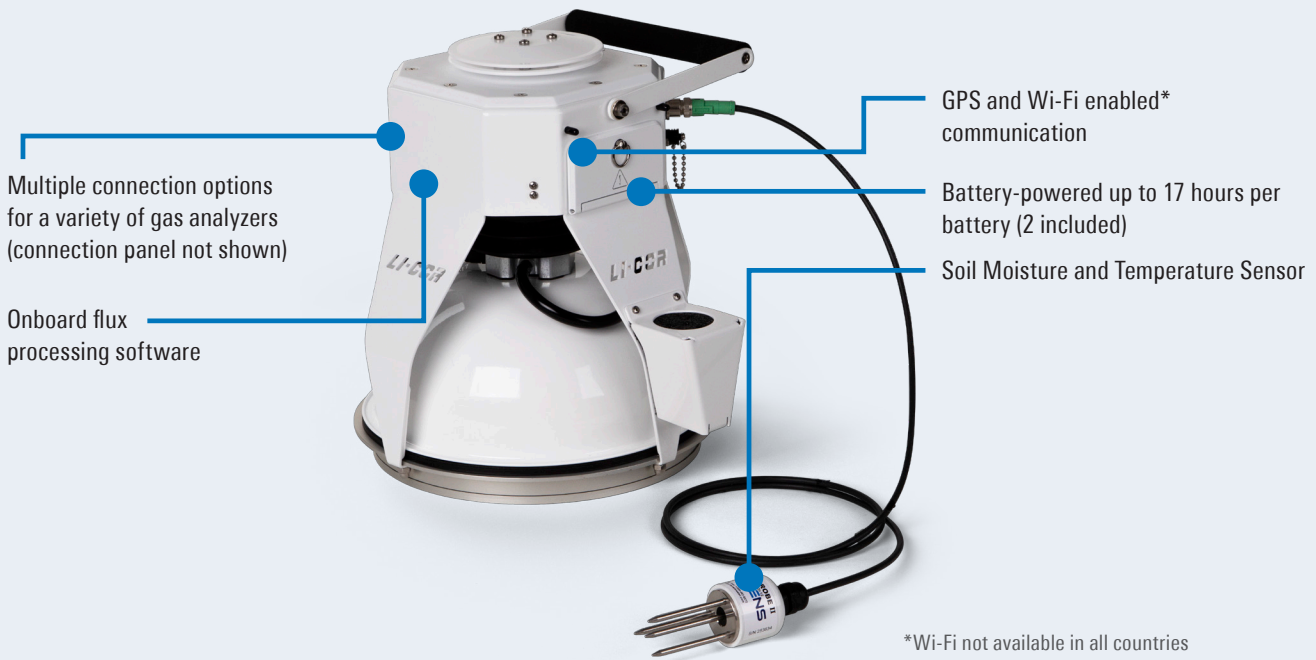


Figure 8. Monitor chamber closing, dead band, and CO₂ concentration changes. These variables are then used in flux calculations through the Smart Chamber's onboard software. Data shown are from an 8200-01S Smart Chamber with LI-870 CO₂/H₂O Analyzer.



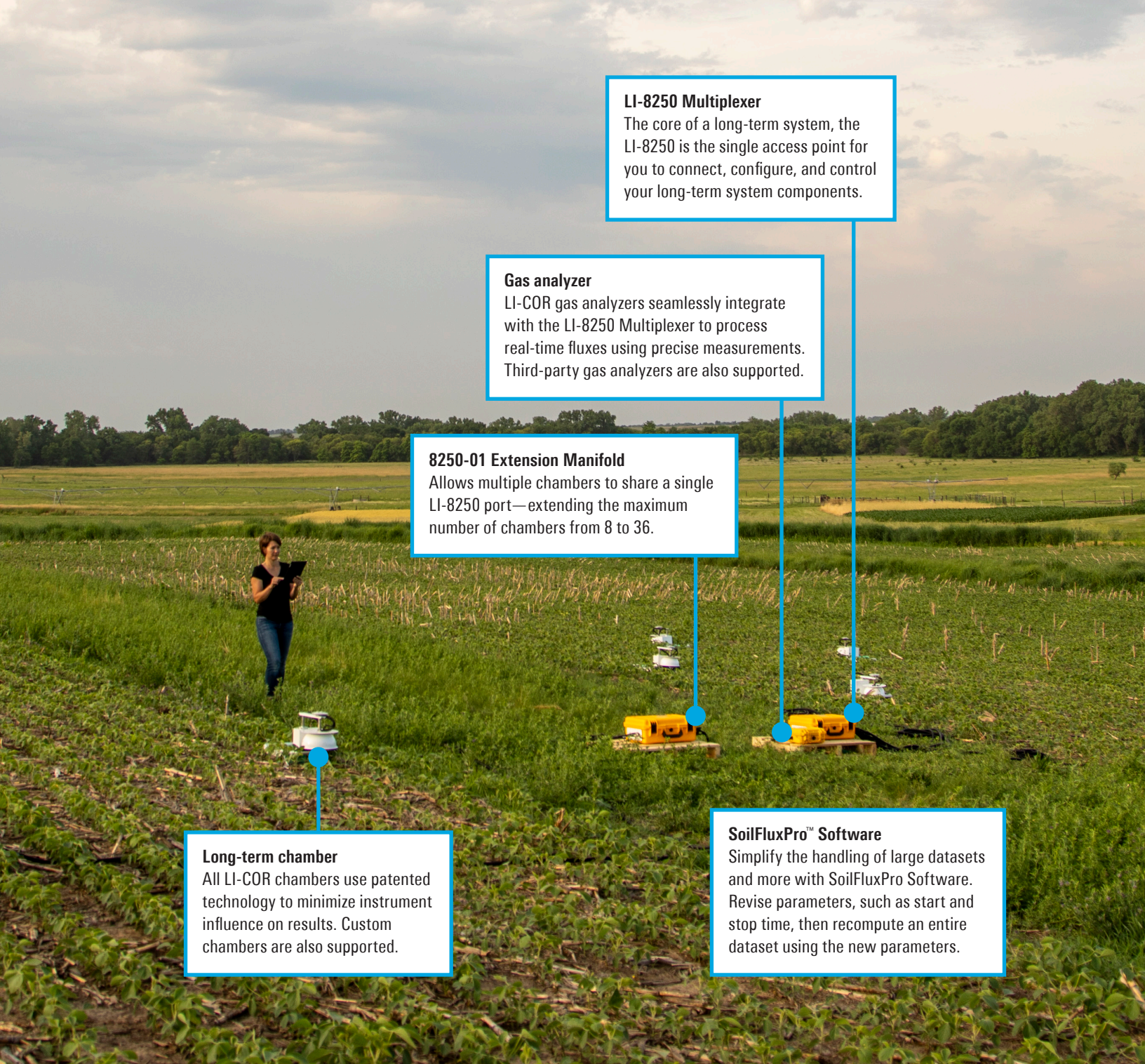
Smart Chamber

The 8200-01S Smart Chamber is a portable and battery-powered chamber that features Wi-Fi connectivity and onboard flux processing with LI-COR gas analyzers. Connect, configure, and control the Smart Chamber using your mobile device or laptop via the embedded web server to see real-time flux data from multiple gas species.



The Smart Chamber difference

- Includes the same patented technology unique to all LI-COR chambers
- Processes fluxes, integrated with auxiliary sensor, GPS, and time stamp data, in real-time with LI-COR gas analyzers
- View measurements, diagnostics, and data files from all LI-COR devices using an intuitive browser-based interface
- Collect third-party analyzer data concurrently with Smart Chamber data and merge them using SoilFluxPro™ Software
- Use the Trace Gas Sampling Kit to collect gas samples and log ancillary data with the Smart Chamber



LI-8250 Multiplexer
The core of a long-term system, the LI-8250 is the single access point for you to connect, configure, and control your long-term system components.

Gas analyzer
LI-COR gas analyzers seamlessly integrate with the LI-8250 Multiplexer to process real-time fluxes using precise measurements. Third-party gas analyzers are also supported.

8250-01 Extension Manifold
Allows multiple chambers to share a single LI-8250 port—extending the maximum number of chambers from 8 to 36.

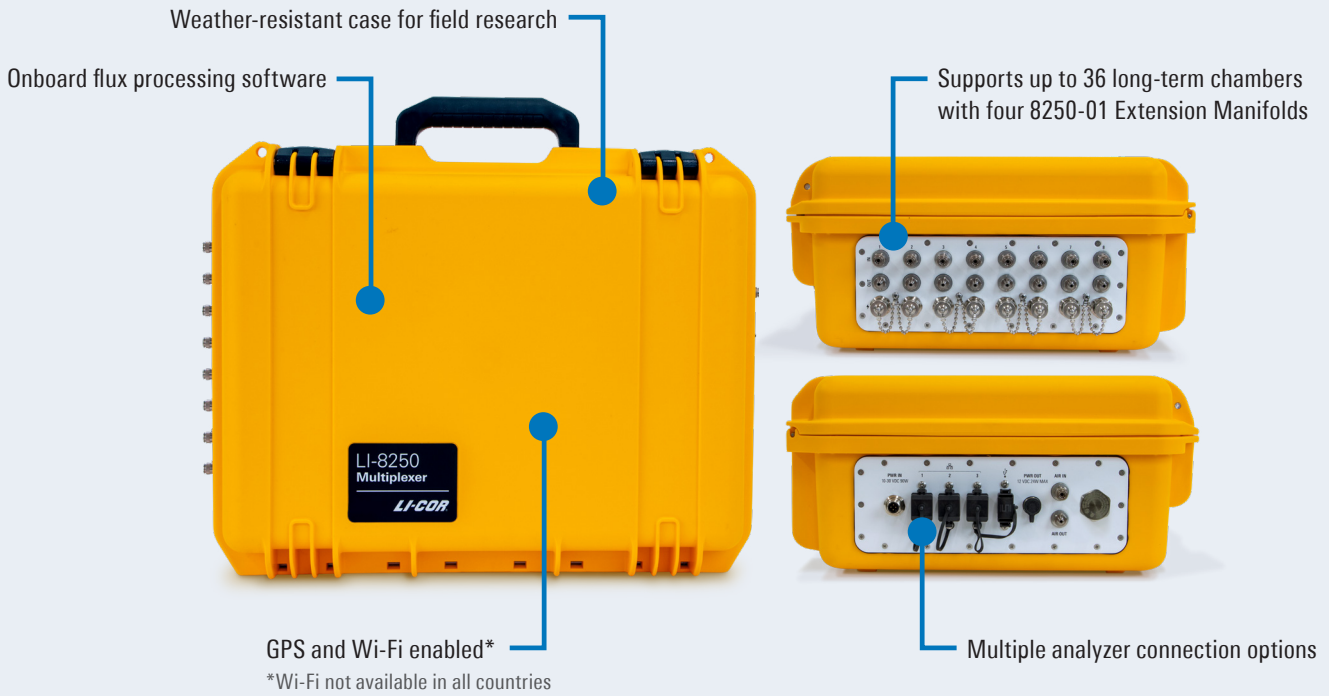
Long-term chamber
All LI-COR chambers use patented technology to minimize instrument influence on results. Custom chambers are also supported.

SoilFluxPro™ Software
Simplify the handling of large datasets and more with SoilFluxPro Software. Revise parameters, such as start and stop time, then recompute an entire dataset using the new parameters.

Long-term systems: Evaluate spatial and temporal variability

A long-term system provides data useful for assessing both the spatial and temporal variability of soil gas flux. This is accomplished by making preconfigured, automated measurements over time using up to 36 chambers placed around your study site. This information is valuable to:

- Examine how events, such as rainfall, impact soil gas flux
- Evaluate how flux is regulated by environmental variables, such as soil temperature and soil moisture
- Characterize diurnal and seasonal flux patterns



LI-8250 Multiplexer

The LI-8250 Multiplexer is the connection and control center of a long-term system directing the flow of gas between long-term chambers and gas analyzers. The LI-8250 processes fluxes on-site with a LI-COR gas analyzer, and you can see flux data live by connecting to the web server using Wi-Fi and your mobile device or laptop.



LI-8250 Multiplexer advantages

- View data, configure measurements, and interact with all connected LI-COR devices from a single point
- Make continuous automated measurements using any combination of up to 36 clear and opaque chambers
- Research even in harsh conditions with a rugged design
- Receive summary and raw data files to monitor your site from anywhere when connected to your site's cellular modem

Interested in measuring trace gas evolution in flasks? The 8250-660 Flask Sampling Kit enables you to use your long-term system for flask measurements too.

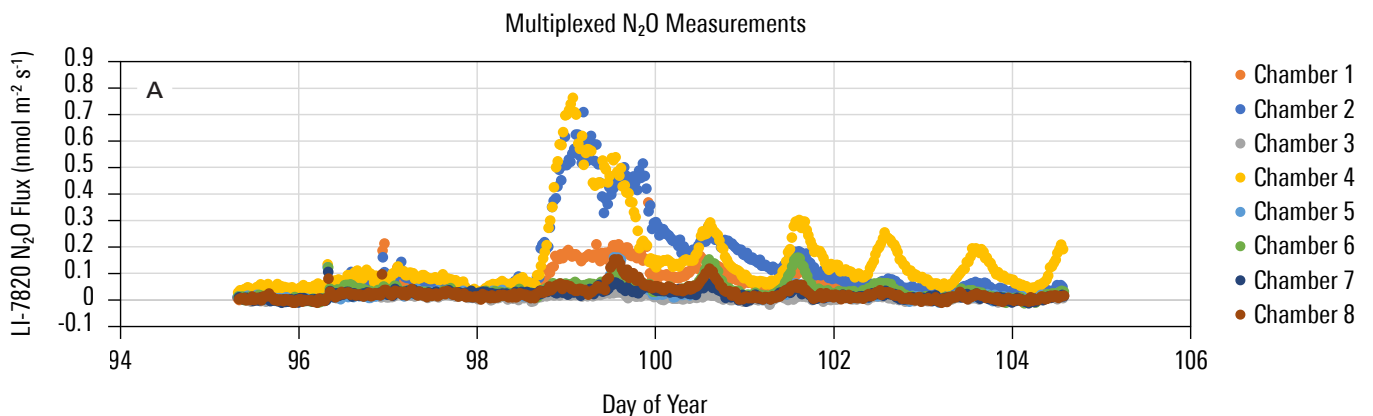
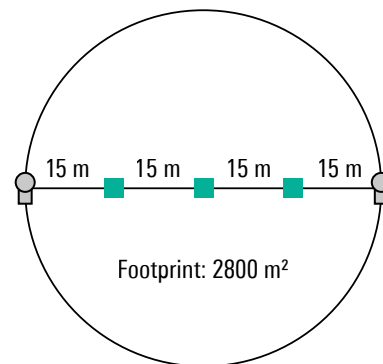


8250-01 Extension Manifold

The 8250-01 Extension Manifold expands your research site and opportunities. Each Extension Manifold occupies a single port on the LI-8250 Multiplexer, allowing 8 chambers to share the same port. A long-term soil gas flux system with 4 Extension Manifolds lets you collect data from up to 36 separate chambers in various conditions, enabling you to ask new research questions and to have more confidence in the answers.

8250-01 Extension Manifold advantages

- Powered, configured, and controlled using the LI-8250 Multiplexer
- Extends your research site to up to 36 chambers
- Grows your site footprint up to 2800 square meters
- Weather-resistant case for field research



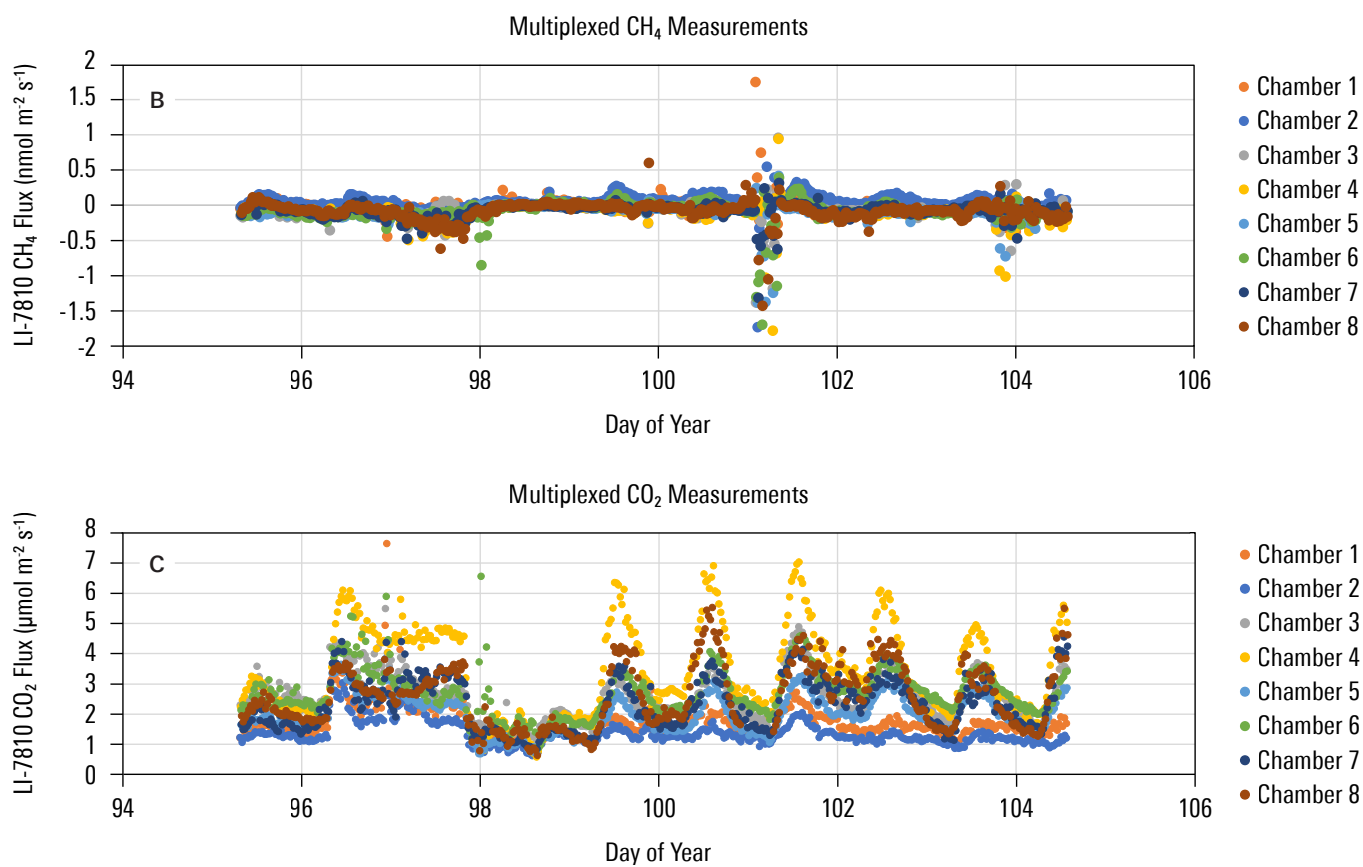


Figure 9. Measurements at a fescue lawn site in Lincoln, Nebraska demonstrate the temporal variability of soil gas fluxes. A diurnal pattern indicates positive N₂O and CO₂ fluxes were likely influenced by temperature. However, a sudden increase in CO₂ flux at around the 97th day of the year was likely caused by a rain event where the flux of CO₂ increased until soil saturation suppressed it. CH₄ flux was largely stable, with small negative flux due to oxidation. Fluxes shown were measured using the LI-7820 N₂O/H₂O and LI-7810 CH₄/CO₂/H₂O Trace Gas Analyzers. Flux data was analyzed and charted using SoilFluxPro™ Software.



LI-COR long-term chambers

All LI-COR chambers include innovations to ensure the chambers have minimal impact on the soil environment and your measurements. Long-term chambers are intended to be left in the field for extended periods. Connect multiple SDI-12 sensors and light sensors to the chamber to collect ancillary data throughout your measurements.

- Patented vent design maintains ambient pressure in the chamber.
- Adjustable legs allow deployment on uneven surfaces and slopes.
- Chamber movement minimizes disturbance to soil gas concentrations.
- Clear chambers enable net carbon exchange measurements.



8200-104 Opaque Long-Term Chamber

The 8200-104 uses a reflective white enamel chamber that rotates to and from the soil collar for automated measurement of soil respiration.



8200-104C Clear Long-Term Chamber

The 8200-104C is specifically designed for net carbon exchange (NCE) research. A clear chamber allows plants within the collar to receive sunlight and continue photosynthesis during a measurement—helping you better understand the net carbon exchange within an ecosystem.

Custom chamber integration

If you have a chamber specifically designed for your application, the LI-8250 Multiplexer will allow you to integrate that chamber into a long-term soil gas flux system.



Gas analyzers

Choose a gas analyzer based on your gas of interest. LI-COR soil gas flux systems let you connect with a range of gas analyzers according to your research needs. When using LI-COR gas analyzers, you can automate measurements specific to your analyzer, see processed fluxes live from your mobile device or laptop, and examine key diagnostics for your measurement.



LI-870 CO₂/H₂O Analyzer

The LI-870 takes rapid and repeatable CO₂ and H₂O measurements for both survey and long-term systems.

- Powered directly by the 8200-01S Smart Chamber or LI-8250 Multiplexer
- Designed to be small and lightweight for a full day of survey measurements
- Features a user-serviceable optical bench in a durable, weather-resistant case



Trace Gas Analyzers

LI-COR Trace Gas Analyzers provide high performance with low power requirements and easily integrate into survey and long-term soil flux systems for an entirely comprehensive research solution.

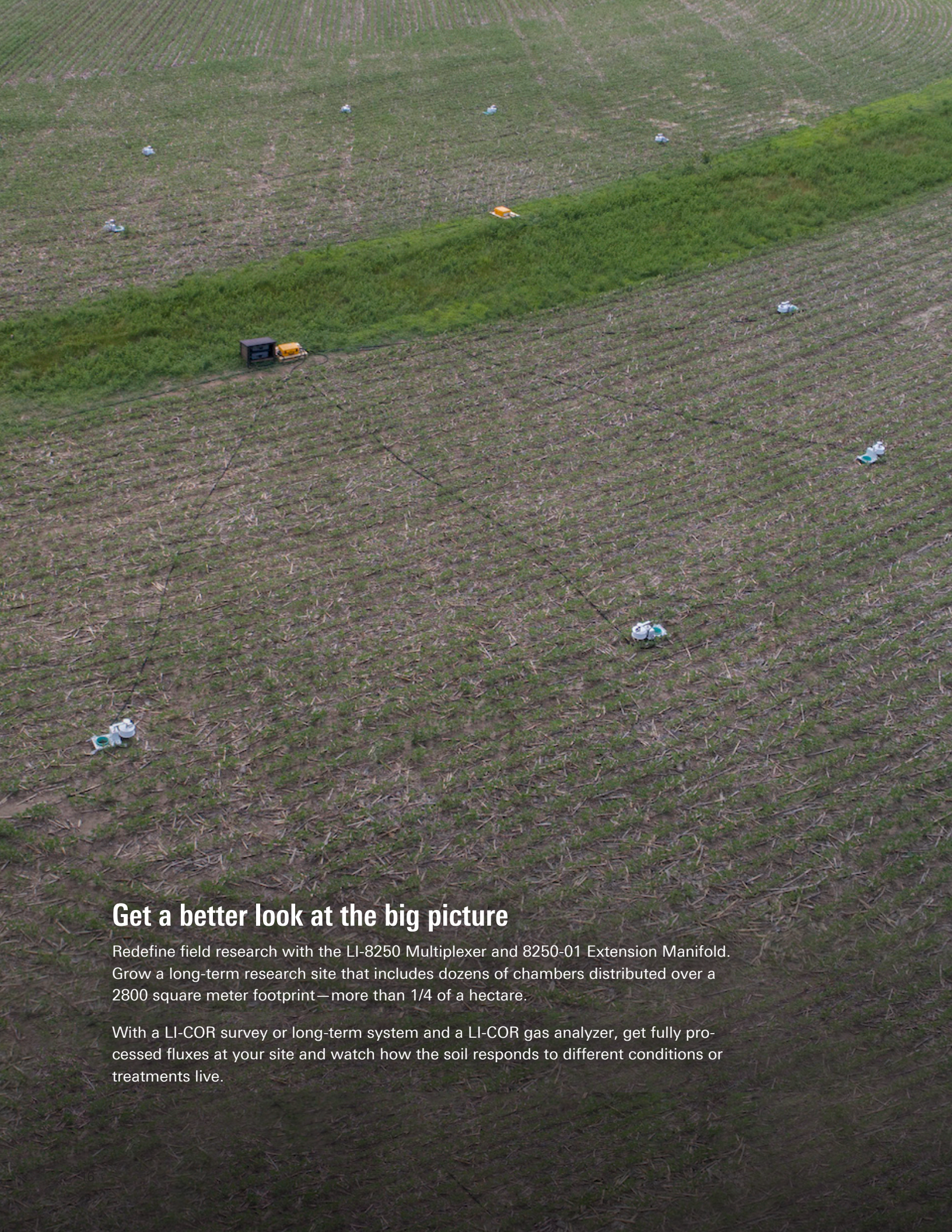
- Utilize Optical Feedback-Cavity Enhanced Absorption Spectroscopy (OF-CEAS) and a suite of patented technologies
- Are powered by hot-swappable, long-lasting batteries or AC power
- Require minimal field enclosure for long-term deployment
- Are easily portable for survey measurements

LI-7810 CH₄/CO₂/H₂O Trace Gas Analyzer

The LI-7810 delivers high-precision CH₄ and CO₂ concentration measurements with benchtop precision and stability in a rugged, weather-resistant design.

LI-7820 N₂O/H₂O Trace Gas Analyzer

The LI-7820 offers high-precision N₂O measurements in a low power, reliable design that is built for field research.



Get a better look at the big picture

Redefine field research with the LI-8250 Multiplexer and 8250-01 Extension Manifold. Grow a long-term research site that includes dozens of chambers distributed over a 2800 square meter footprint—more than 1/4 of a hectare.

With a LI-COR survey or long-term system and a LI-COR gas analyzer, get fully processed fluxes at your site and watch how the soil responds to different conditions or treatments live.

Specifications

LI-8250 Multiplexer

General

Dimensions: 38.5 cm L × 52 cm W × 18.5 cm H

Weight: 7.7 kg

Weatherproof Rating: Tested to IEC IP55 standard

Operating Range:

Temperature: -20 to 45 °C

Humidity: 0 to 95% RH, non-condensing

User Data Storage: 8 GB total non-volatile

GPS: Accuracy 2.5 m CEP

Coverage Area:

Maximum radius from LI-8250 to chambers: 15.0 m with one cable assembly or 30.0 m with an Extension Manifold and two cable assemblies.

Maximum diameter of measurement circle: 30.0 m with two cable assemblies or 60.0 m with two Extension Manifolds and four cable assemblies.

Plumbing:

Flow rate to/from chambers: ~2 to 3 lpm

Pump type: Diaphragm (pumps in the analyzers subsample air stream in the LI-8250)

Barometric Pressure Sensor:

Measurement Range: 20 to 110 kPa

Sensor Accuracy: ±0.4 kPa from 50 to 110 kPa

Resolution: 0.006 kPa

Communication

Seven LED Indicators: Power, Ready, Ethernet activity (3), USB activity (2)

Connectivity: Three Ethernet Ports, Wi-Fi (not available in some countries)

Wi-Fi Compatibility: 2.4 GHz, 802.11 a/b/g/n/ac

Connectivity Ports:

USB-A: One sealed and strain-relieved for connection to LI-870 CO₂/H₂O Analyzer

USB-A: Two standard, internal for USB mass storage (file transfer) or a country specific Wi-Fi adapter.

RJ-45 Ethernet: Three sealed and strain-relieved for connection to LI-COR Trace Gas Analyzers, non-LI-COR analyzers, site Ethernet network, or cellular modem. Connectors also accept standard, non-sealed RJ-45 Ethernet cables for lab use.

Output Port Connector: Full-duplex RS-422 communication, 115,200 baud, plus 24 VDC power. Each output port is current-limited to ~1.8 A. Combined steady state power consumption for all chambers should not exceed 1 A.

Power

Power Requirements: 10 to 30 VDC (120 VAC and 240 VAC with optional power supply). The LI-8250 powers the 8200-104/C chambers, the 8250-01 Extension Manifold, and the LI-870 CO₂/H₂O Analyzer. Other analyzers are powered separately. See Table 1 for total system power requirements.

Table 1. Total system power requirements.

| Typical Power Consumption (W) | | | |
|-------------------------------|------|---------------------|-----------------|
| Instrument | Idle | Sampling/ Moving | Max/ Warm-up |
| LI-8250 | 4.8 | 15.6 | 18.2 |
| 8250-01 (each) | 0.8 | 9.2 | 11.0 |
| 8200-104/C (each) | 0.36 | 4.8 | N/A |
| LI-870 | 5.0 | 5.0 | 14.0 |

Note: The max listed for the LI-8250 is a typical maximum, there is no additional warm-up power. Chamber power reaches 4.8 W only when opening or closing, not the entire time of sampling.

8250-01 Extension Manifold

General

Dimensions: 38.5 cm L × 52 cm W × 18.5 cm H

Weight: 7.4 kg

Weatherproof Rating: Tested to IEC IP55 standard

Operating Range:

Temperature: -20 to 45 °C

Humidity: 0 to 95% RH, non-condensing

Plumbing:

Flow rate to/from chambers: ~2 to 3 lpm

Pump type: Diaphragm

Communication

Two LED Indicators: Power, Ready

Input Port Connector: Full-duplex RS-422 communication, 115,200 baud, plus 24 VDC power.

Output Port Connector: Full-duplex RS-422 communication, 115,200 baud, plus 24 VDC power. Each output port is current-limited to ~1.1 A. Combined steady state power consumption for all chambers should not exceed 1 A.

Power

Power Requirements: Input voltage range is supplied by LI-8250 Multiplexer. Typical 24V and 1.8A max. See Table 1 for total system power requirements.

Alternate Power Input: 21.9 to 26.5 VDC 80 W

8200-104 Opaque and 8200-104C Clear Long-Term Chambers

General

Dimensions: 48.3 cm L x 38.1 cm W x 33.0 cm H

Weight: 7.3 kg

Chamber Volume: 3955 cm³

Soil Area Exposed: 317.8 cm²

Weatherproof Rating: Tested to IEC IP55 standard

Air Temperature Thermistor:

Operating Range: -20 to 50 °C

Accuracy: ±0.3 °C from -20 to 50 °C

Light Sensor Current Input:

Range: 0 to 100 µA

Resolution: 1.5 nA

Accuracy: ±(0.37 % of Reading + 8 nA)
from -20 to 50 °C

SDI-12 Communications Interface:

Max Number of Devices: 10

Output Voltage: 12 VDC, 200 mA

8200-01S Smart Chamber

General

Bowl Diameter: 20 cm

Chamber Volume: 4244.1 cm³

Soil Area: 317.8 cm²

Weight (including battery): 4.3 kg

Memory: 8 GB total non-volatile (includes operating system and user data files)

GPS: Accuracy 2.5 m CEP

Operating Temperature Range: -20 to 50 °C

Air Temperature Thermistor:

Operating Range: -20 to 70 °C

Accuracy: ±0.5 °C over 0 to 70 °C

Barometric Pressure Sensor:

Operating Range: 50 to 110 kPa

Accuracy: ±0.4 kPa

Resolution: 1.5 Pa Typical

Communication

Wi-Fi Compatibility: 2.4 GHz, 802.11 a/b/g/n/ac

SDI-12 Interface: Intended for connecting Stevens HydraProbe for soil moisture and temperature (included)

Connectivity Ports:

USB-A: One sealed and strain-relieved for connection to LI-870 CO₂/H₂O Analyzer

USB-B: One sealed and strain-relieved for connection to non-LI-COR gas analyzers

RJ-45 Ethernet: One sealed and strain-relieved for connection to LI-COR Trace Gas Analyzers

USB-A: One standard for connection to external Wi-Fi adapter

Thermocouple Port: Intended for measuring soil temperature, using 9982-080 (not included, optional)

Cable Length:

2 m (Ethernet, for LI-COR Trace Gas Analyzers)

1.2 m (USB-B, LI-870 Power for LI-870 CO₂/H₂O Analyzer)

Power

Power Out: 10 to 17 VDC battery, unregulated, self-resetting fused, 2 A

Battery: 4S Li-Ion, 98 Wh, Smart-Battery with protection

Battery Life:

34 hours use; 2 batteries, 17 hours per battery (2 minutes per collar active time, and 20 collars total per hour).

20 hours use; 2 batteries 10 hours per battery (above use case and including powering LI-870 CO₂/H₂O Analyzer).

LI-870 CO₂/H₂O Analyzer

General

Dimensions: 28.4 cm L x 27.9 cm W x 12.4 cm H

Weight: 2.31 kg

Operating Temperature Range:

-20 to 45 °C, without solar loading

Power Consumption:

After Warmup (without pump):

0.33 A @ 12 VDC (4.0 W) average

After Warmup (with pump):

0.42 A @ 12 VDC (5.0 W) average

Measurement Range:

CO₂: 0 to 20,000 ppm

H₂O: 0 to 60 mmol mol⁻¹

Measurement Accuracy:

CO₂: Within 1.5% of reading

H₂O: Better than 1.5% of reading

Trace Gas Analyzers

General

Measurement Technique: OF-CEAS (Optical Feedback-Cavity Enhanced Absorption Spectroscopy)

Measurement Rate: 1 sample per second (1 Hz)

Optical Cavity Volume: 6.41 cm³

Flow Rate: 250 sccm nominally; 70 sccm with reduced flow rate kit

Total Weight: 10.5 kg (including batteries)

Case Dimensions: 51 cm x 33 cm x 18 cm (L x W x H)

Operating Temperature Range: -25 to 45 °C (without solar load, under normal operating conditions)

Operating Humidity Range: 0 to 85% RH (non-condensing, without solar load, under normal operating conditions)

Sample Line Humidity Range: 0 to 99.9% non-condensing

Operating Pressure Range: 70 to 110 kPa

Connectivity: Ethernet, Wi-Fi (not available in some countries)

Wi-Fi Compatibility: 2.4 GHz, 802.11 a/b/g/n/ac

Power Consumption:

Steady State Operation: 22 Watts at 25 °C without batteries charging

Warmup: Up to 65 W without batteries charging; up to 100 W with batteries charging

Off: Up to 2.3 W when powered from pins 3 and 4 without batteries charging; up to 0.2 W when powered from pins 1 and 5 without batteries charging

Power Supply Requirements:

Pins 1 and 5 (24 VDC Input): Minimum 6 A at 24 V

Pins 3 and 4 (10.5 to 33 VC Input): Minimum 14 A at 10.5 VDC; 6 A at 24 VDC

Power Supply: Universal Power Adapter (Input: 100 to 240 VAC, 50-60 Hz; Output: 24 VDC)

Battery Life: 8 hours typical with 2 batteries

Pollution Degree: 2

Over-voltage Category: II

Class 1 Laser Product

LI-7810 CH₄/CO₂/H₂O Trace Gas Analyzer

CH₄ Measurements

Response Time (T₁₀-T₉₀): ≤ 2 seconds from 0 to 2 ppm

Range: 0 to 100 ppm

Precision (1σ):

0.60 ppb at 2 ppm with 1 second averaging

0.25 ppb at 2 ppm with 5 second averaging

Maximum Drift: < 1 ppb per 24-hour period

CO₂ Measurements

Range: 0 to 10,000 ppm

Precision (1σ):

3.5 ppm at 400 ppm with 1 second averaging

1.5 ppm at 400 ppm with 5 second averaging

H₂O Measurements

Range: 0 to 60,000 ppm

Precision (1σ):

45 ppm at 10,000 ppm with 1 second averaging

20 ppm at 10,000 ppm with 5 second averaging

LI-7820 N₂O/H₂O Trace Gas Analyzer

N₂O Measurements

Response Time (T₁₀-T₉₀): ≤ 2 seconds from 0 to 330 ppb

Range: 0 to 100 ppm

Precision (1σ):

0.40 ppb at 330 ppb with 1 second averaging

0.20 ppb at 330 ppb with 5 second averaging

Maximum Drift: < 1 ppb per 24-hour period

H₂O Measurements

Range: 0 to 60,000 ppm

Precision (1σ):

45 ppm at 10,000 ppm with 1 second averaging

20 ppm at 10,000 ppm with 5 second averaging

Specifications subject to change without notice.

Ready to lay the groundwork for exceptional soil gas flux data?

See all our solutions at
licor.com/soil



LI-COR Biosciences

4647 Superior Street
Lincoln, Nebraska 68504

Phone: +1-402-467-3576
Toll free: 800-447-3576

envsales@licor.com
envsupport@licor.com
www.licor.com/env

Regional Offices

LI-COR GmbH, Germany

Siemensstraße 25A
61352 Bad Homburg
Germany

Phone: +49 (0) 6172 17 17 771

envsales-gmbh@licor.com
envsupport-eu@licor.com

LI-COR Ltd., United Kingdom

St. John's Innovation Centre
Cowley Road
Cambridge
CB4 0WS
United Kingdom

Phone: +44 (0) 1223 422102

envsales-UK@licor.com
envsupport-eu@licor.com

©2021 LI-COR, Inc.

For patent information, visit www.licor.com/patents.

LI-COR and SoilFluxPro are trademarks or registered trademarks of LI-COR, Inc. in the United States and other countries. All other trademarks belong to their respective owners.

The LI-COR board of directors would like to take this opportunity to return thanks to God for His merciful providence in allowing LI-COR to develop and commercialize products, through the collective effort of dedicated employees, that enable the examination of the wonders of His works.

"Trust in the LORD with all your heart and do not lean on your own understanding. In all your ways acknowledge Him, and He will make your paths straight."

— Proverbs 3:5,6

ISO 9001:2015 certified

980-19412 Rev. 2 09/21

