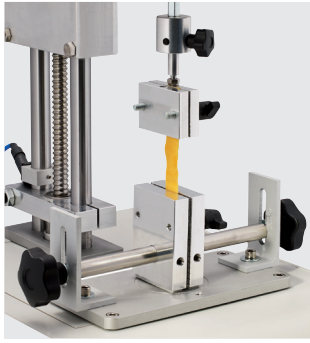
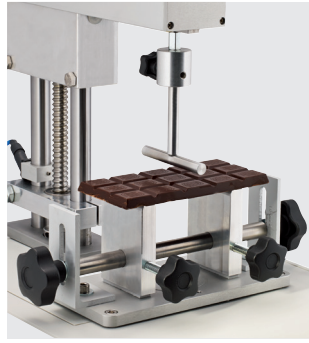


FIXTURES



**TENSILE
FIXTURE**
(Ref. 130092)

Tensile force.



**3 POINTS BEND
FIXTURE**
(Ref. 130091)

Breaking force, Friability,
Springiness.



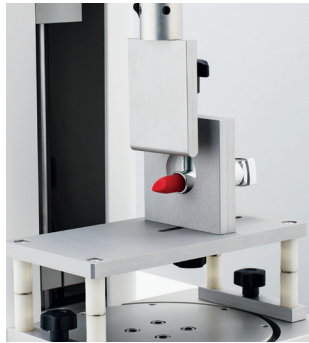
**KRAMER 5 BLADES
FIXTURE**
(Ref. 130094)

Hardness and tenderness
on small samples
(Requires table Ref. 310106).



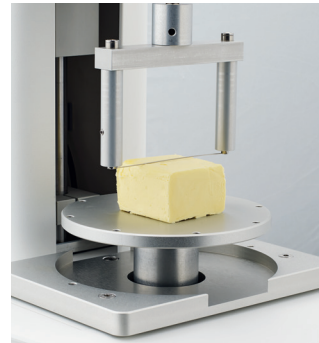
**FILM COMPRESSION
FIXTURE**
(Ref. 130031)

Accessory to measure
strength of film
(Requires table Ref. 310106).



**LIPSTICK CANTILEVER
FIXTURE**
(Ref. 130147)

Accessory to measure
strength of lipstick.



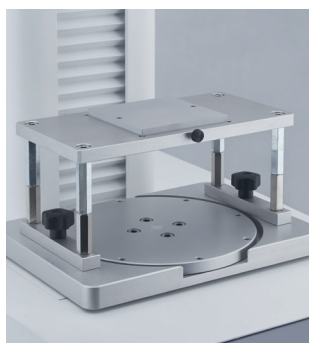
**WIRE SHEAR
FIXTURE**
(Ref. 130076)

Accessory to measure
consistency of product
as Butter or Cheese.



**SYRINGE
TEST FIXTURE**
(Ref. 130145)

Study of needed force
to use syringe.



**FIXTURE BASE
TABLE**
(Ref. 310106)

Universal holder
for fixture and sample.



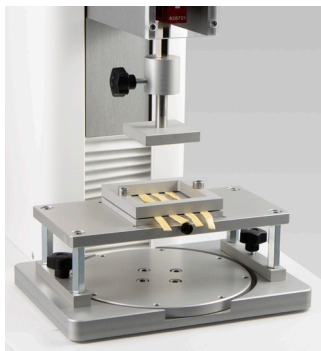
EXTRUSION FIXTURE
(Ref. 100200)

Forward and backward extrusion of
liquid, cream, paste, gel
(Requires table Ref. 310106).



**MINI OTTAWA
FIXTURE**
(Ref. 130097)

Hardness and tenderness on small samples.
(Requires table Ref. 310106).



**PASTA
FIXTURE**
(Ref. 130152)

Firmness and stickiness of pasta.
(Requires table Ref. 310106).



**VOLODKEVICH
FIXTURE**
(Ref. 130068)

Shear cut and bite test.
(Requires table Ref. 310106).



**MOHRS
PROBE**
(Ref. 130165)

Cutting test with blade for meat, fish...



**FRICITION
FIXTURE**
(Ref. 120013)

Friction measurement according to ASTM D1894.



**DOUGH STICKINESS
FIXTURE**
(Ref. 121017)

Measure of dough stickiness.
(Requires table Ref. 310106).



**NOODLE TENSILE
FIXTURE**
(Ref. 130168)

Measure of noodle elasticity and rupture.



**SPREAD TEST
FIXTURE**
(Ref. 130157)

Measure of the spreading capacity of creams, pastes and gels.
(Requires table Ref. 310106).



**WARNER-BRATZLER
FIXTURE**
(Ref. 130074)

Cutting blade fine.



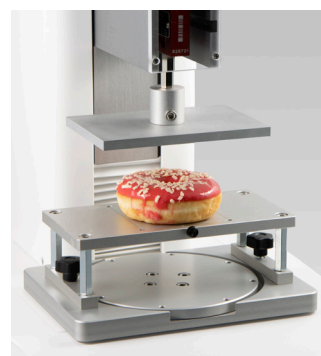
**THREE RINGS
PROBE CUTTING**
(Ref. 130186)

Measure firmness of sample as pasta, rice, corn...



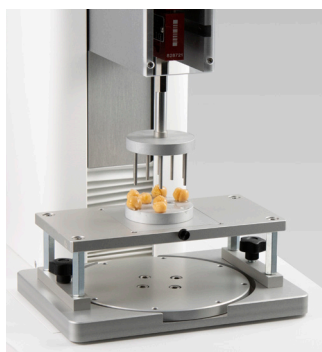
**KIEFFER DOUGH
EXTENSIBILITY FIXTURE**
(Ref. 130148)

Measure of dough elasticity and rupture.
(Requires table Ref. 310106).



**COMPRESSION TOP
PLATE FIXTURE**
(Ref. 130153)

Measure firmness by uniform compression.
(Requires table Ref. 310106).



**MULTIPLE
PROBE FIXTURE**
(Ref. 130170)

Probe for puncture on 9 sample.



8 PROBES KIT
(Ref. 130166)

Reference	Designation
121023	CONICAL PROBE 30°
130019	1/2 SPHERICAL PROBE DIAMETER 30 mm
130037	CYLINDRICAL PROBE H:25 mm Diam:40 mm
130064	CLEAVER PROBE 25 mm
130077	CYLINDRICAL PROBE DIAMETER 2 mm
130079	1/2 SPHERICAL PROBE DIAMETER 8 mm
130101	FLAT PROBE DIAMETER 50 mm
130124	CYLINDRICAL PROBE DIAMETER 10 mm

**WE CAN ALSO MAKE CUSTOMISED
PROBES AND FIXTURES ON REQUEST.**

Tel : +33 (0)4 78 08 54 06
Fax : +33 (0)4 78 08 69 44
contact@lamyrheology.com

**11 A, rue des Aulnes
69410 Champagne au Mont d'Or
France**



www.lamyrheology.com