

FIRST PRODIG

The solution
to your most
exacting methods.



The viscometer with a 7 " touch screen allows you to create and save your measurement methods, display results or curves, analyse your data, print reports, manage users and protect data.

FEATURES AND BENEFITS

- Speed or shear rate control.
- Programming and recording method.
- Constant, step by step or ramp methods.
- Direct curve on display.
- Direct analysis with regression.
- Direct report editing.
- Direct measure with time to stop.
- User and locked mode.
- Data recording and USB transfer.
- Torque gage on display.
- Integrated temperature probe.
- Printer connection.
- Compatible with RheoTex software.
- Display of viscosity limits according to mobile and speed.

WHAT'S INCLUDED WITH DEVICE ?

(according to part number)

- 4 Spindles LV or 6 spindles RV (p75).
- 1 Integrated temperature probe.
- 1 Standard stand or rack stand (p68).
- 1 Touch screen stylus.
- 1 User manual.
- 1 Calibration and checking certificate.
- 1 Microfiber cloth.

AVAILABLE INSTRUMENTS

Reference	Designation	Viscosity range (mPa.s)
N707700	FIRST PRODIG VISCOMETER WITH SPINDLES RV-2 TO RV-7 (with standard stand)	200 to 240M
N707709	FIRST PRODIG VISCOMETER WITH SPINDLES RV-2 TO RV-7 (with rack stand)	200 to 240M
N707300	FIRST PRODIG LR VISCOMETER WITH SPINDLES LV-1 TO LV-4 (with standard stand)	15(1*) to 22M
N707309	FIRST PRODIG LR VISCOMETER WITH SPINDLES LV-1 TO LV-4 (with rack stand)	15(1*) to 22M

M for million / (*) Can reach 1 mPa.s with MS ULV (p.78). Not included.

SPECIFICATIONS

Type of instrument

Rotating springless viscometer with 7" Touch screen

Rotation speeds

Unlimited number of speeds between 0.3 and 250 rpm

Torque range

Standard Version: 0.05 to 13 mNm
LR version: 0.005 to 0.8 mNm

Temperature Probe

Equipped with a PT100 sensor which indicates temperatures between -50°C to +300°C

Accuracy

+/- 1 % of the full scale

Repeatability

+/- 0,2 %

Display

Viscosity (cP/Poises or mPa.s / Pa.s)
Speed – Shear rate – Torque – %- Shear stress - Time – Temperature

Norms

ASTM : D115 ; D789 ; D1076 ; D1084 ; D1337 ; D1338 ; D1417 ; D1439 ; D1824 ; D2196 ; D2243 ; D2364 ; D2556 ; D3288 ; D3468 ; D3716 ; D3730 ; D3794 ; D4016 ; D4143 ; D4878 ; D4889 ; D5324 ; D5400 ; D6279 ; D6577 ; D7394 ; D8020 ; E2975 ; F1607 ; **BS** 5350 ; **DIN** 2555 ; 3219 ; 52007-1 ; 53019-1 ; 54453 ; **EN** 302-7 ; 2555 ; 3219 ; 10301 ; 12092 ; 12802 ; 15425 ; 15564 ; **ISO** 1652 ; 2555 ; 2884-2 ; 3219 ; 10364-12

Languages

French/English/Turkish/German

Supply voltage

90-240 VAC 50/60 Hz

Analog output

4 – 20 mA

PC connections

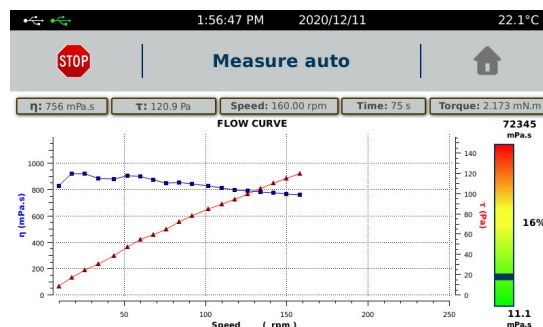
RS232 Port and USB

Printer connections

USB Host Port -
Compatible PCL/5

Dimensions and weight

Head: D160 x H270 x W200 mm
Aluminium stand: L280 x W200 x H30 mm
Stainless steel rod: Length 500 mm
Weight: 6.7 kg



COMPATIBLES MEASURING SYSTEMS

MS-RV (p75), **MS-LV** (p75), **MS-BV** (p76),
MS-VANES (p77), **MS-KREBS** (p77),
MS-SV (p79), **MS-ULV** (p78), **MS-DIN** (p72).

COMPATIBLES TEMPERATURE CONTROLS

EVA LR (p60), **EVA MS DIN** (p58),
RT-1 PLUS (p61).

OPTIONS & ACCESSORIES



- Carrying case (p68).
- External temperature probe -50°C to +300°C (p69).
- HELIPRO stand (p66).
- Barcode reader with stand and cable (p68).
- Bayonet spindle rack (p69).
- Touch screen protector (p68).
- Viscosity standards oil (p69).
- Dymo printer (p68).
- Small volume package (p67).
- THERMOCELL package (p61).
- RheoTex software (p64-65).

Tel : +33 (0)4 78 08 54 06
Fax : +33 (0)4 78 08 69 44
contact@lamyrheology.com

11 A, rue des Aulnes
69410 Champagne au Mont d'Or
France



www.lamyrheology.com